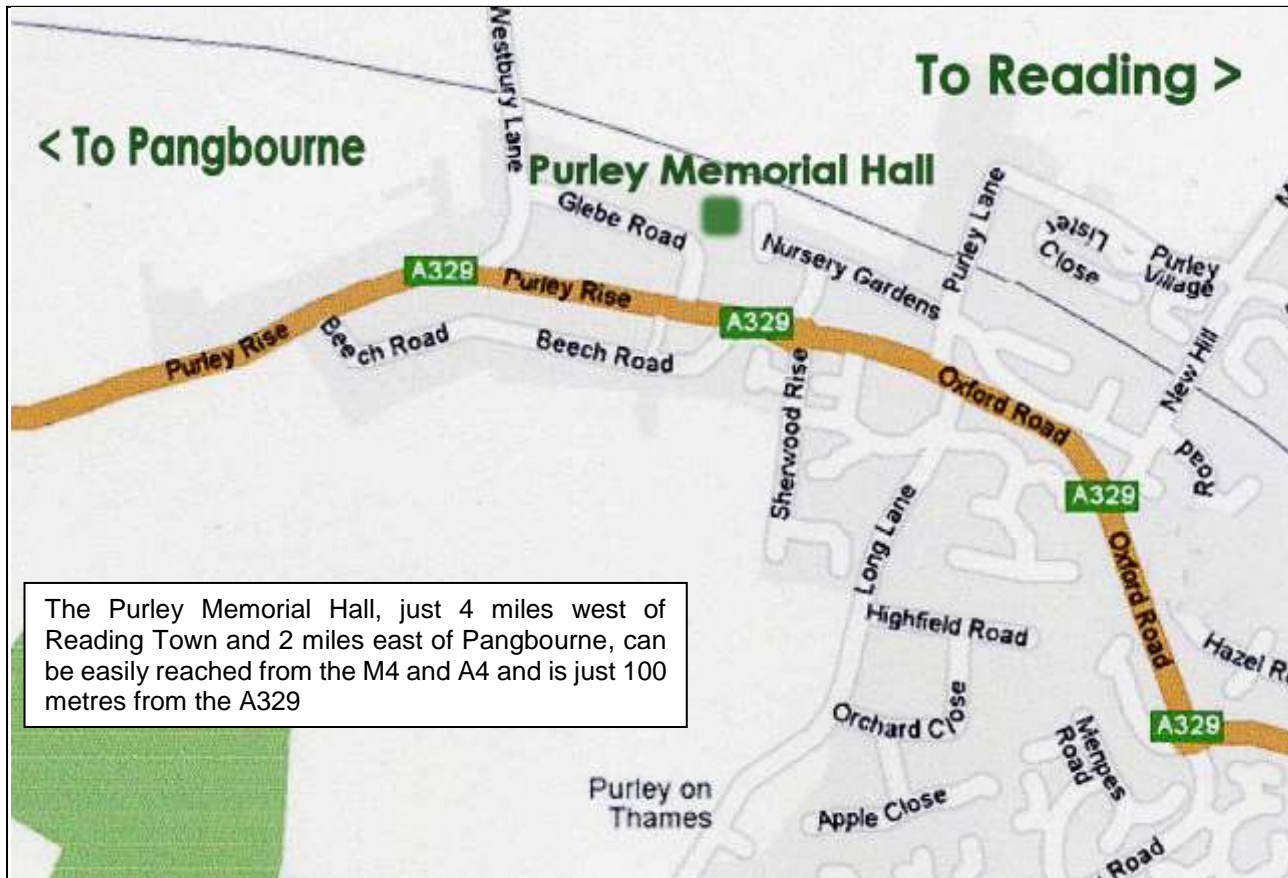
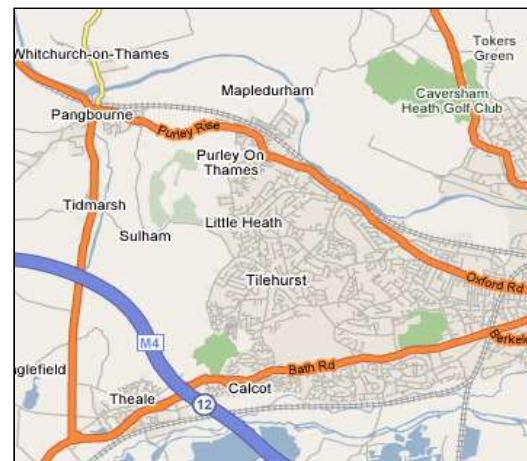
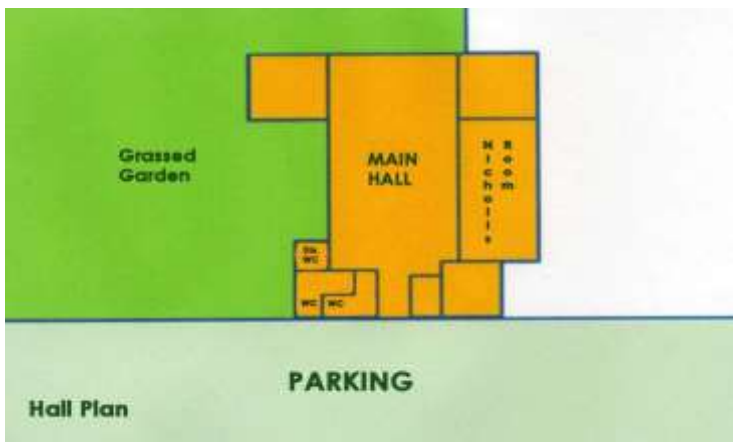


Purley Memorial Hall



The Purley Memorial Hall, just 4 miles west of Reading Town and 2 miles east of Pangbourne, can be easily reached from the M4 and A4 and is just 100 metres from the A329



**Glebe Road
Purley on Thames
Reading
RG8 8DP**

Charity Registration No. 300191

The Memorial Hall in Purley on Thames is close to the River Thames and provides panoramic views over the Thames Valley, South Oxfordshire and Mapledurham; an area of outstanding natural beauty.

The hall was built as a memorial to those people who lost their lives in the first and second world wars; to provide affordable space for the residents of the village and local areas to use as they so wish. The hall was built by the voluntary work of the villagers and funded by money raised by the villagers.

The hall is available for bookings for weddings, parties, group events, art & craft exhibitions and meetings. The hall can accommodate up to 150 people seated.

There are two main rooms, the Main Hall and the Nicholls Room; the Nicholls Room can be hired independently of the Main Hall.

Ample parking is available outside the hall with the potential for overflow parking onto the grassed garden.



The grassed garden at the side of the hall also provides an ideal area for a marquee to expand further the space available.



The Main Hall



The Nicholls Room

Facilities provided are

- Table and chairs
- Hot drink making facilities
- Crockery
- Cutlery
- Disabled toilet facilities
- Inductive Looped hearing system

The hall contains a small kitchen suitable for serving hot drinks and reheating pre-prepared foods.

We also have a small meeting room than can accommodate up to 4 to 5 people either as a quiet area to work or for a small meeting.



The John Devine Room

Booking the Memorial Hall

This can be made by contacting the Booking Secretary Rita Benedict on 07772 129 187, Email: purleymemhall@yahoo.co.uk or by printing off a booking form from our web pages at www.purleyonthames.org.uk/memhall.



Kitchen

Booking Fees (from 1st Sept 2016)

Main Hall

	Weekdays	Weekends inc Nicholls Room
Clubs and Charities	£8.75 per hr	£8.75 per hr
Private Hire/ Parties	£15.75 per hr ^{2 4}	£15.75 per hr ^{2 4}
Weddings ³	-----	£265 per day ⁴
Marquees (pitch only)	£60 per day ⁵	£60 per day ⁵

Nicholls Room only

Private / Commercial	£8.75 per hr	-----
----------------------	--------------	-------

John Devine Room only

Private / Commercial	£4.50 per hr	£4.50 per hr
Clubs and Charities	£4.00 per hr	£4.00 per hr

- ¹ Deposit of £50 required
- ² For hiring up to 8 hours, for longer periods by negotiation with Booking Secretary
- ³ Price for Weddings includes hire of the Main Hall and Nicholls Room
- ⁴ Deposit of £100 required
- ⁵ This is only the fee for allowing a marquee to be erected. All costs associated with the hire and erection of the marquee is the responsibility of the hirer.

Limited storage facilities are available to regular hirers on a first come first served basis.